

STATE A

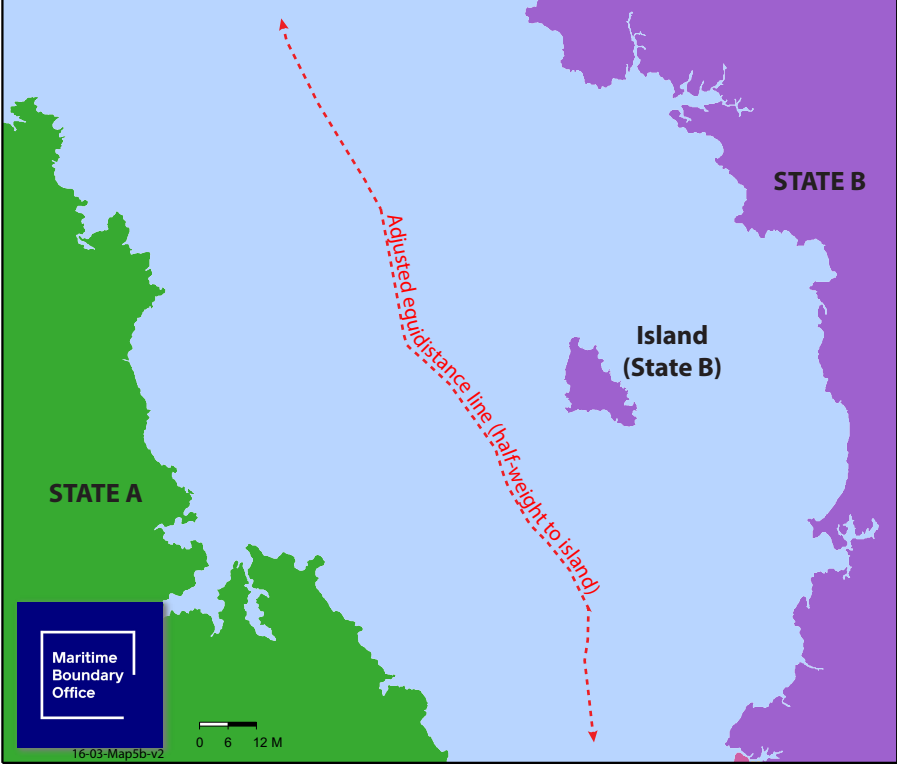
STATE B

**Island
(State B)**

*Strict equidistance line
(full weight to Island)*

Maritime
Boundary
Office

0 6 12 M



STATE A

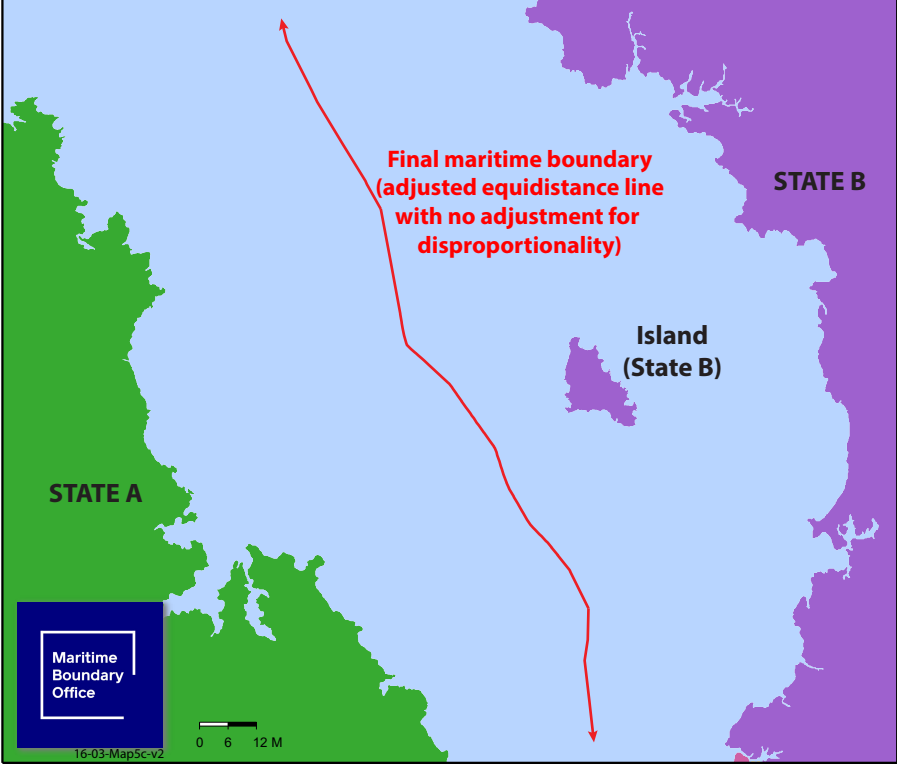
STATE B

**Island
(State B)**

Adjusted equidistance line (half-weight to island)



0 6 12 M



**Final maritime boundary
(adjusted equidistance line
with no adjustment for
disproportionality)**

STATE B

**Island
(State B)**

STATE A

Maritime
Boundary
Office

0 6 12 M